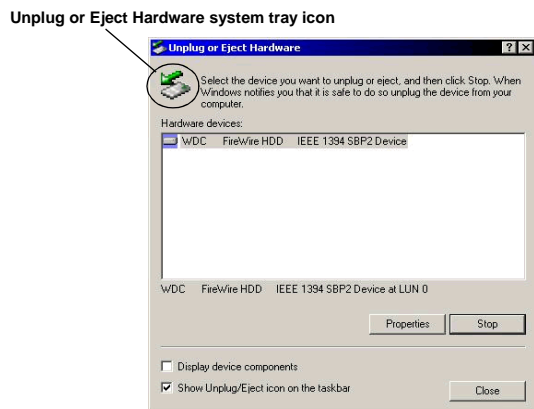


Unplugging Your WD FireWire External Hard Drive

CAUTION: Do not unplug your FireWire external hard drive before following the steps below as this could result in data loss.

Windows Users

Double click on the Windows Unplug or Eject Hardware icon in your system tray (located in the bottom right corner of your screen—see the dialog box below for a depiction of this icon). The following dialog box displays:



Select and highlight **WDC FireWire HDD** from the list, then click **Stop**. To confirm your selection of the drive to be disconnected, click **OK**. You may now safely disconnect your Western Digital FireWire external hard drive.

Macintosh Users

To unplug your Western Digital FireWire external hard drive, drag the FireWire hard drive icon over to the Trash/Eject icon. After the disk icon has disappeared from the desktop, you may safely disconnect the drive.

Technical Support Services

If you need additional information or help during installation or normal use of this product, contact Western Digital Technical Support. When calling for support, please have your drive serial number, system hardware, and operating system version available.

Telephone Assistance

800.ASK.4WDC (800.275.4932)

+31.20.446.7651 (Europe)

Online Services

support.wdc.com

www.westerndigital.com

1-Year Limited Warranty

Western Digital Corporation ("WDC") warrants that the Product, in the course of its normal use, will be free from defects in material and workmanship for a period of one (1) year and will conform to WDC's specification therefor. This limited warranty period shall commence on the purchase date appearing on your purchase receipt.

WDC shall have no liability for any Product returned if WDC determines that the product was stolen from WDC or that the asserted defect a) is not present, b) cannot reasonably be rectified because of damage occurring before WDC receives the Product, or c) is attributable to misuse, improper installation, alteration (including removing or obliterating labels), an accident, or mishandling while in your possession. Subject to the limitations specified above, your sole and exclusive warranty shall be, during the period of warranty specified above and at WDC's option, the repair or replacement of the Product. The foregoing warranty of WDC shall extend to repaired or replaced Products for the balance of the applicable period of the original warranty or ninety (90) days from the date of shipment of a repaired or replaced Product, whichever is longer.

The foregoing limited warranty is WDC's sole warranty and is applicable only to products sold as new. The remedies provided herein are in lieu of a) any and all other remedies and warranties, whether expressed, implied or statutory, including but not limited to, any implied warranty of merchantability or fitness for a particular purpose, and b) any and all obligations and liabilities of WDC for damages including, but not limited to accidental, consequential, or special damages, or any financial loss, lost profits or expenses, or lost data arising out of or in connection with the purchase, use or performance of the Product, even if WDC has been advised of the possibility of such damages.

In the United States, some states do not allow exclusion or limitations of incidental or consequential damages, so the limitations above may not apply to you. This warranty gives you specific legal rights, and you may also have other rights which vary from state to state.

Additional warranty information is available on the Western Digital Web site at support.wdc.com/warranty

Radio Frequency Interference Statement: This device complies with Part 15 of the FCC rules. Operation is subject to the following two conditions: (1) This device may not cause harmful interference; and (2) This device must accept any interference received, including interference that may cause undesired operation. Changes or modifications to this device not expressly approved by Western Digital could void the user's authority to operate the equipment.

Western Digital and the Western Digital logo are registered trademarks of Western Digital Technologies, Inc. Other marks may be mentioned herein that belong to other companies.

©2002 by Western Digital Technologies, Inc. All rights reserved.
Assembled in the USA.

Western Digital
20511 Lake Forest Drive
Lake Forest, CA 92630

For service and literature:

800.ASK.4WDC USA
+31.20.4467651 Europe
www.westerndigital.com

2079-001037-000
11/02



Western Digital External Hard Drive

FireWire®, IEEE 1394, i.LINK™

Quick Install

Hardware Installation and Software Setup for your FireWire External Hard Drive

1 Getting Started

- **System Requirements:** An available OHCI-compliant FireWire port on a system with Mac OS 9.X or later. PC users require an OHCI-compliant FireWire port on a system with Windows® 98SE or higher.
- **Record Serial Number:** Write down your Western Digital serial number for setup and technical support purposes. The serial number is located on the bottom of your FireWire external hard drive.

Western Digital FireWire External Hard Drive Kit Contents



Also included: warranty card, power cord, and Quick Install guide.

CAUTION: Do not drop or jolt your Western Digital FireWire external hard drive or attempt to open the drive and service it yourself. These actions will void the warranty. The drive is not intended as a portable device.

2 Connecting Your WD FireWire External Hard Drive

1. Power on your computer.
2. Plug the end of the power connector with the flat side facing up into the power supply socket located on the back of the drive.
3. Connect the power cord (with the AC power supply connected) into an electrical outlet. Verify that the power LED is lit.
4. Connect one end of the included FireWire cable into an available FireWire port on your computer.
5. Plug the other end of the FireWire cable into the back of the external hard drive (port 1 or port 2).



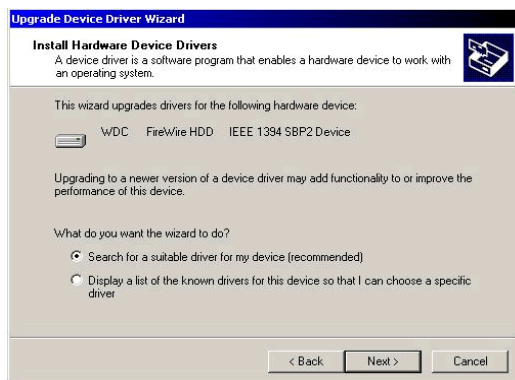
FireWire External Hard Drive Rear and Front Panel

3 Installing the Drivers

Windows Setup

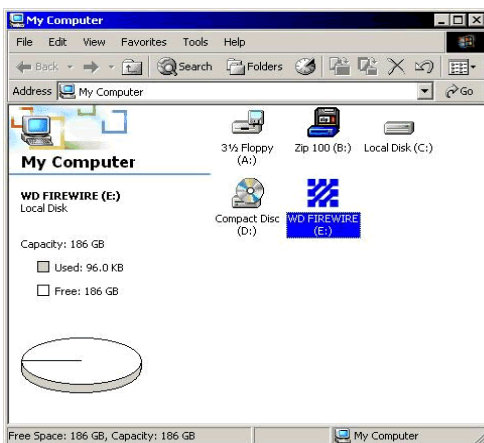
Windows Me/2000/XP

1. After connecting the drive as described on page 2, Windows will automatically detect your Western Digital FireWire external hard drive and install the drivers.



Note: If the above **Add New Hardware Wizard** dialog box appears, select the Recommended option, either to search for a suitable driver or install the drivers automatically, and click **Next**.

2. If prompted, restart your computer. Otherwise, skip to the next step.
3. A new drive icon will appear in your **My Computer** window. Your Western Digital FireWire external hard drive is preformatted as one FAT32 partition and is now ready to use.



Windows 98SE (Second Edition)

Note: Have your original Windows 98SE Installation Setup CD ready.

1. Western Digital highly recommends that you first download the Windows 98SE 1394 Storage Supplement Update:
 - a. Go to support.microsoft.com and search for Knowledge Base Article ID Q242975 in the upper left hand corner of the page.
 - b. Once you have located the article, download and install the update on your computer.
2. When prompted, restart your computer.
3. After restart, plug the end of the power connector with the flat side facing up into the power supply socket located on the back of the drive. Verify that the green power LED is lit.
4. Connect the FireWire cable into an available FireWire port on your computer and the other end to the back of the drive.
5. You will see a series of three **Version Conflict** dialog boxes. Click **Yes** in each box to keep your existing files (clicking **No** will prevent the drivers from loading properly). These dialog boxes will only display the first time you connect your Western Digital FireWire external hard drive. Windows will automatically detect the drive and a new hard drive icon will appear in the **My Computer** window. Your Western Digital FireWire external hard drive is preformatted as one FAT32 partition and is now ready to use.

To reformat or partition the drive for Windows 2000 and XP

Note: Although your Western Digital FireWire external hard drive is preformatted as a single FAT32 partition, you may wish to reformat to the NTFS file system or partition the drive into multiple volumes.

1. Right-click on the **My Computer** icon located on your desktop and select **Manage** from the shortcut menu to open the **Computer Management** window.
2. Click on **Disk Management** on the left side of the window.
3. In the bottom half of the window, right-click on the **Unallocated** portion of the drive and select **New Partition** from the shortcut menu.
4. Click **Next** to proceed with the **New Partition Wizard**. You may select the partition file type, specify the partition size, and assign a drive letter or path. **IMPORTANT:** Do not select Dynamic Disk as a partition or volume type, as it will not work for a removable hard drive.
5. Click **Finish** to confirm your settings.

Macintosh Setup

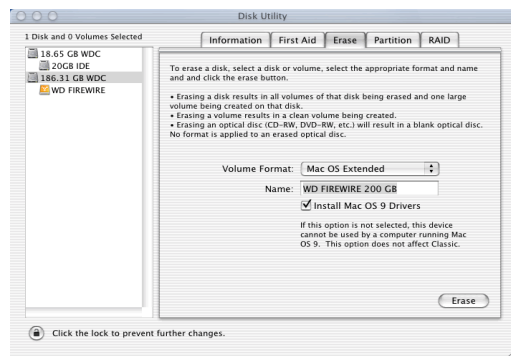
CAUTION: Formatting or initializing will erase all data contained on the drive. Be sure to make a backup copy of all of your data.

Mac OS 9.X

1. Connect the drive as described on page 2.
2. A hard drive icon named “WD FireWire” will appear on the desktop. You must reinitialize the drive as Macintosh systems do not have 48-bit addressing support for FAT32 volumes:
 - a. From the **Apple** menu, select **Control Panels > Extensions Manager**.
 - b. Disable **File Exchange** from the extensions list by clearing the adjacent check box and click **Restart**.
 - c. After restart, a message appears asking you to initialize the drive. Enter a name and select **Mac OS Extended** from the menu and click **Initialize**.
 - d. Click **Continue** to confirm drive initialization. A hard drive icon with the name you assigned will appear on the desktop after the formatting process is completed. To re-enable **File Exchange**, select the check box in **Extensions Manager** and click **Restart**. Your newly formatted Western Digital FireWire external hard drive is now ready to use.

Mac OS X v10.X

1. Connect the drive as described on page 2.
2. You must reinitialize the drive using Apple’s Disk Utility as Macintosh systems do not have 48-bit addressing support for FAT32 volumes. From your existing hard drive, select **Applications > Utilities > Disk Utility**. Select your new drive on the left side and click on the **Erase** tab from the top menu. The following window displays:



3. Select **Mac OS Extended** from the **Volume Format** menu and enter a name for your drive in the **Name** field.
4. Click **Erase** to begin drive format. A hard drive icon with the name you assigned will appear on the desktop after the formatting process is completed. Your newly formatted Western Digital FireWire external hard drive is now ready to use.

Note: To partition the drive into multiple volumes, select the **Partition** tab from the Disk Utility program menu and follow the instructions.

4 Registering Your Product

Your new Western Digital FireWire external hard drive includes 90 days of free technical support from the date of purchase. To be eligible for the free technical support, you must register your product with Western Digital.

You can also take advantage of Western Digital’s special offers and product updates by registering your FireWire external hard drive. Register online now at www.wdc.com/products/registration.

General Troubleshooting

- **The drive does not power up.**

Make sure that the power cable connected to the back of the external hard drive is securely attached and that the green-colored power LED is lit.
- **The drive icon does not appear on my system.**
 - a. If you are installing the drive on Mac OS X, a drive icon will not appear until the drive has been reinitialized by Apple’s Disk Utility (see page 5).
 - b. If you are installing the drive on Windows, verify that the FireWire cables are connected properly. You may need to unplug both FireWire and power cables and replug them once again. If your system has a FireWire PCI adapter card, make sure that its drivers have been installed prior to connecting the drive. Contact the hardware manufacturer for installation procedures.
- **My computer displays either the wrong or incomplete capacity.**

The capacity of a hard drive can be reported in either decimal gigabytes (1 GB = 1,000,000,000 bytes) or in binary gigabytes (1 GB = 1,073,741,824 bytes). Although the decimal system is most often used to describe a hard drive’s capacity such as on the box label, both Windows and Macintosh operating systems report the drive in binary gigabytes. So for example, a Western Digital 200 GB hard drive’s capacity will be displayed as approximately 186 binary gigabytes.