

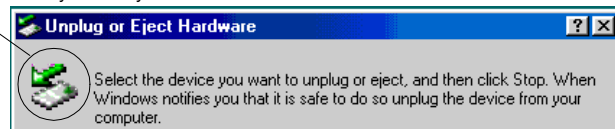
Unplugging Your FireWire CardBus PC Card

CAUTION: Do not unplug your FireWire CardBus PC Card without following these steps. Data loss and disk damage could result.

Windows Users

Click on the Windows **Unplug or Eject Hardware** icon in your system tray (located in the bottom right corner of your computer screen). Then click on **Stop Western Digital CardBus PC Card OHCI IEEE 1394 Host Controller**. The following dialog box displays:

Unplug or Eject Hardware system tray icon



Select the WD FireWire CardBus PC Card from the list, then click **Stop**. In the next dialog box, prepare the FireWire PC Card for safe removal by clicking **OK**.

Mac Users

Click on the Western Digital FireWire CardBus PC Card icon on your desktop and press **⌘ + Y**. You can also do the following:

1. Drag the Western Digital FireWire CardBus PC Card icon to the Trash.
2. Wait until the disk icon disappears from the desktop.
3. Disconnect the PC Card.

Technical Support Services

If you need additional information or help during installation or normal use of our products, contact Western Digital Technical Support. Please have your CardBus PC Card serial number available.

Online Services

Email: customer.service@wdc.com

Internet: support.wdc.com

Product Registration: www.wdc.com/products/registration

Telephone Assistance

800.ASK.4WDC (800.275.4932) or +31.20.446.7651 (Europe)

Western Digital and the Western Digital logo are registered trademarks of Western Digital Technologies, Inc. Other marks that may be mentioned herein belong to other companies.

© 2002 by Western Digital Technologies, Inc. All rights reserved.
Assembled in the USA.

Western Digital FireWire® CardBus PC Card

Quick Install

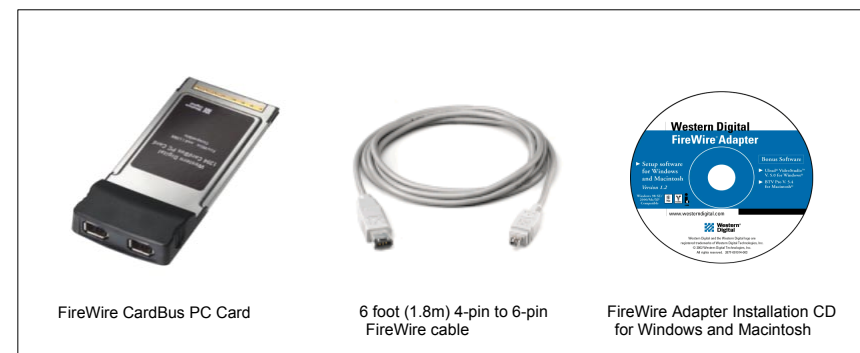
Hardware Installation and Software Setup for your Western Digital FireWire CardBus PC Card

To download the full installation guide, go to www.wdc.com/library and click on the Current FireWire Drives and Adapters link. Pour télécharger le guide complet d'installation, allez à l'adresse www.wdc.com/library et cliquez sur le link Current FireWire Drives and Adapters. Eine ausführliche Installationsanleitung können Sie im Internet unter www.wdc.com/library herunterladen, indem Sie dort auf den Link Current FireWire Drives and Adapters klicken.

Before Getting Started:

- Make sure you have a 32-bit CardBus compatible PC Card slot and a CD-ROM drive on your computer and that you are running Mac OS 8.6 or Windows 98 SE (Second Edition) or higher. Your computer must be a PowerBook G3 or higher or a PC with a minimum 200 MHz processor and at least 64 MB of RAM.
Note: The PowerBook G3 Family M-3553 PC Card slot is not CardBus compatible.
- Write down your Western Digital serial number for technical support purposes. The serial number is located on the white label on the back of the PC Card.
- Gather together your computer system manuals and the supplied items.

Western Digital FireWire CardBus PC Card Kit Contents



Also included: warranty card, Quick Install guide

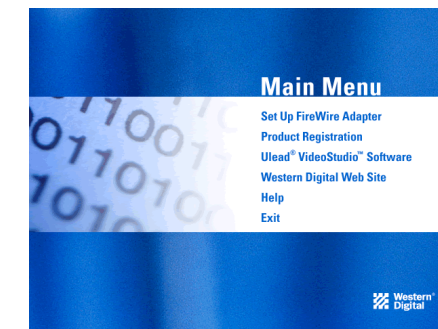


CardBus PC Card Setup for Windows®

Note: The proper device drivers must be loaded on your system before installing your Western Digital CardBus PC Card. By doing so, your adapter will properly display its information under the Windows Device Manager. Follow the steps in “Windows Installation” below *before* installing the FireWire CardBus PC Card.

Windows Installation

1. Insert the Western Digital FireWire Adapter Installation CD into your CD-ROM drive. The program will start automatically.
2. The main menu displays, showing the following options:



Click on **Set Up FireWire Adapter**.

3. The **Western Digital FireWire Adapter Setup** welcome screen appears. Click **Next**.
4. In the **Driver Update** dialog box, click **Next** to continue. This will prepare your system for FireWire support.
5. Next, you will be prompted to register your CardBus PC card online at Western Digital's Web site. You must register the product to receive 90 days of free Western Digital technical support. After entering your product information in each field, click **Submit** and close your browser to complete registration.
6. Click **Next** again to verify you have the latest FireWire drivers from Microsoft®.
7. Follow the instructions for your version of Windows:
 - a. *Windows Me/2000/XP:* Your version of Windows already has the required FireWire driver support.
 - 1) Click **Next**.
 - 2) When the Congratulations dialog box appears, click **Finish**. You must restart your computer for the new settings to take effect.
 - 3) When you have finished installing all software, click **Exit** in the Main Menu and click **Close**.

CardBus PC Card Setup for Windows (continued)

- b. *Windows 98 SE*: Your Western Digital FireWire Adapter software is ready to finalize your setup.
 - 1) Click **Finish** when you see the Congratulations screen.
 - 2) The Windows 98 SE Update dialog box displays. Click **Yes** to continue.
 - 3) The Microsoft license agreement for the Windows 98 SE Update displays.
 - 4) Click **Yes** to continue.
 - 5) When prompted to restart, click **Yes**.
- c. *Windows 98 and earlier*: Your version of Windows does not support FireWire Plug and Play devices.
 - 1) Click **Exit**.
 - 2) Upgrade to Windows 98 SE or higher, and reinstall the FireWire PC Card.

Ulead® VideoStudio™ Software Installation for PC

1. Insert the Western Digital FireWire Adapter Installation CD into your CD-ROM drive. The program will start automatically.
2. Click on the Ulead VideoStudio button on the main menu.
3. Follow the on-screen directions to complete software installation.

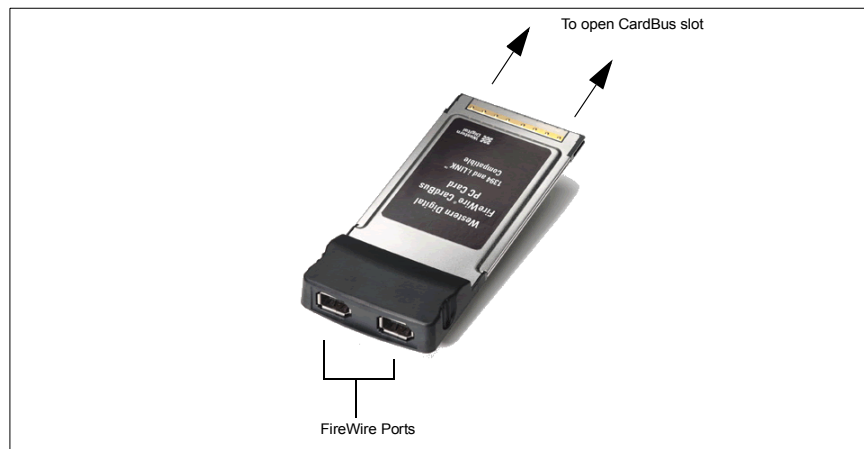
Recommended System Requirements for Digital Video Editing

PC Users

- Intel® Pentium® III 450 Mhz or higher (700 Mhz or higher recommended)
- 128 MB RAM
- 500 MB of available hard drive space for program files
- 4 GB+ hard drive space for video capture and editing
- Windows compatible display with at least 800x600 resolution

Hardware Installation—Windows and Macintosh

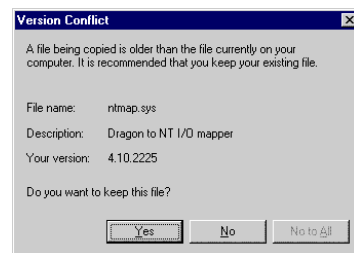
1. With your computer turned off, carefully insert the PC Card into the CardBus slot on your computer.
2. Power up your computer.



Western Digital FireWire CardBus PC Card Installation

3. *Windows Me/2000*: Windows Me/2000 automatically detects and configures your FireWire CardBus PC Card. Restart your computer.

Windows 98 SE: Restart your computer. After your computer has finished rebooting, you will see a series of five **Version Conflict** dialog boxes, each informing you that the file being copied is older than the file currently on your computer.



Click **Yes** in each dialog box to keep your existing file (clicking **No** will prevent the drivers from loading properly). These dialog boxes will only display the first time you install your FireWire CardBus PC Card.

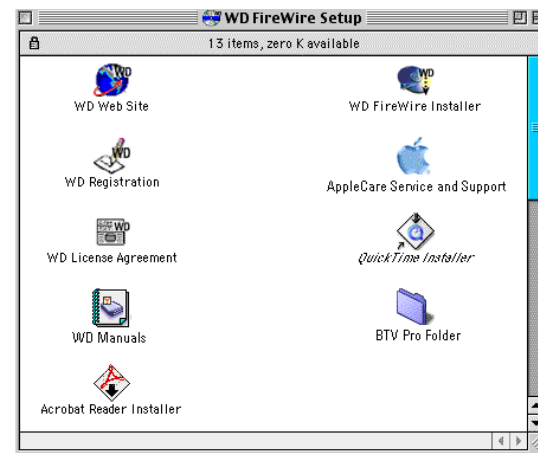
Macintosh: Restart your computer and follow the setup instructions for Macintosh on page 5.

CardBus PC Card Setup for Macintosh

Be sure to install the FireWire CardBus PC Card *before* installing the software. See “Hardware Installation—Windows and Macintosh” on page 4 for details.

Macintosh Installation

1. Insert the Western Digital FireWire Adapter Installation CD. The following window displays:



2. Double-click on the **WD FireWire Installer** icon.
3. The Welcome screen displays. Click **Continue**.
4. The FireWire license agreement displays. Click **Accept**.
5. The **WD FireWire Installer** dialog displays. Click **Install**.



6. Click **Restart** to complete installation.
7. After restart, you will be prompted to register your PCI Adapter online at Western Digital's Web site. You must register the product to receive 90 days of free Western Digital technical support. After entering your product information in each field, click **Submit** and close the browser to complete registration.

BTV Pro Software Installation for Macintosh

1. Insert the Western Digital FireWire Adapter Installation CD into your CD-ROM drive. The program will start automatically.
2. Double-click on the **WD FireWire Setup** icon on your desktop.
3. Double-click on the **BTV Pro** folder located in the WD FireWire Setup window.
4. Double-click on the **BTV Pro** icon to begin installation.
5. Follow the on-screen instructions to complete software installation.

Recommended System Requirements for Digital Video Editing

Macintosh Users

- 1.5 MB available hard drive space for program files
- Minimum 12 MB *available* RAM
- 4 GB+ hard drive space for video capture and editing
- Macintosh compatible video input software