

1 Getting Started

Kit Contents

- WD Dual-option™ External USB 2.0* Hard Drive
- 6 ft. (1.8m) USB 2.0 certified cable
- Installation CD with Dantz® Retrospect® Express backup software and detailed user manuals in portable document format (PDF)
- AC adapter and power cord
- Quick Install Guide
- Two stands for vertical placement
- Four feet for horizontal placement

**USB 2.0 host is required for Hi-Speed USB 2.0 performance. USB 2.0 is highly recommended because of the significant reduction in file transfer time compared to USB 1.1.*

System Requirements

Windows®

- Available USB port
- Windows 98SE/Me/2000/XP

Macintosh®

- Available USB port
- Mac® OS v9.2.2 or Mac OS X v10.2.8+

Note: For highest performance and reliability, WD recommends that you install the latest service pack (SP) and updates. Windows users, go to the Start menu and select **Windows Update**. Mac users, go to the Apple menu and select **Software Update**.



Figure 1

2 Setting Up

Note: For more detailed instructions, refer to the user manual on the installation CD or obtain it from support.wdc.com.

Windows 98SE/Me/2000/XP

1. Insert the installation CD into your CD-ROM drive. The program autoruns and launches a setup menu. Select **Install Retrospect Express for WD** (Figure 2). In the next window, click **Next**.
2. The license agreement window is displayed. To proceed, select **I accept the terms in the license agreement** and click **Next**.
3. Enter your **User Name** and click **Next**. In the next window, select the **Recommended** installation option and click **Next**.
4. In the next window, click **Install** to begin installation. After installation, click **Finish**.

Note: If you are running Windows 98SE/Me/2000 and operating system service packs or updates were not installed, you must install them now and restart the computer before proceeding.

5. To register the software, launch the backup software from the Start menu (**Start > Program Files > Retrospect > Retrospect 6.5**).
6. Proceed to Section 3 to connect the drive.

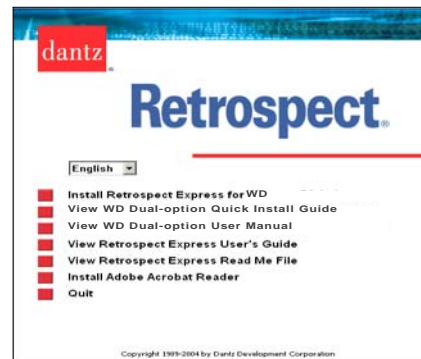


Figure 2

Note: Depending on your system configuration, your computer may attempt to boot from your WD Dual-option drive. Refer to your system's motherboard BIOS setting documentation to disable this feature or visit support.wdc.com, click **Knowledge Base**, and search for answer ID 1201. For more information about booting from external drives, refer to your system documentation or contact your system manufacturer.

Macintosh

Important: Macintosh users must reinitialize the WD drive to HFS Extended Format (or other Mac OS drive format) before using the installation CD. Skip to Section 3 to connect the drive, then follow the steps below to format and set up the drive.

Mac OS v9.2.2

1. To format the drive, select **Control Panel > Extensions Manager** from the Apple menu.
2. Disable **File Exchange** from the extensions list by clearing the adjacent check box, and click **Restart**.
3. After restarting, a message appears prompting you to initialize the drive. Enter a name, select **Mac OS Extended**, and click **Initialize**.
4. Click **Continue** to confirm drive initialization. A hard drive icon with the name you assigned appears on the desktop after formatting is completed. To re-enable **File Exchange**, select the check box in **Extensions Manager** and click **Restart**.
5. After restarting, a new hard drive icon appears on your desktop and your new external USB hard drive is ready to use.
6. Proceed to Section 4 to use the backup software.

Mac OS X v10.2.8+

1. To format the drive, select **Applications > Utilities > Disk Utility**. Select your new drive on the left panel, and click the **Erase** tab on the right panel (Figure 3). If prompted, click **OK**.
2. Select **Mac OS Extended** from the **Volume Format** menu, and enter a name for your drive.
3. Click **Erase** to begin drive formatting. A hard drive icon with the name you assigned appears on the desktop after formatting is completed.
Note: To partition the drive into multiple volumes, select the **Partition** tab from the Disk Utility program menu and follow the instructions.
4. If prompted, restart the system. A new hard drive icon appears on your desktop and your external USB hard drive is ready to use.
5. Proceed to Section 4 to use the backup software.



Figure 3

3 Connecting the Drive

Note: For a single drive, WD recommends using the stands for vertical placement with the Power button on top for easy access. For stacking multiple drives, use the feet for horizontal placement.

Installing the Stands for Vertical Placement

1. Power off the external hard drive and disconnect all its cables.
2. Align the edge of the stand onto the side of the drive adjacent to the back (Figure 4).
3. Press the other edge of the stand toward the drive until the stand snaps firmly into place.
Note: Space the stands approximately 3–4 inches apart and approximately 2–3 inches from the edge of the drive for balance and stability.
4. Repeat this process for the other stand.

Removing the Stands

1. Power off the external hard drive and disconnect all its cables.
2. Place the drive upside down on a clean and steady surface.
3. Using both hands, grasp the base of the stand and carefully bend the stand upward until the stand snaps away from the side of the drive (Figure 4).

Installing the Feet for Horizontal Placement

1. Power off the external hard drive and disconnect all its cables.
2. Place the drive upside down on a clean and steady surface.
3. The back of the drive is keyed with a small crossbar at each corner within the ventilation slots for feet placement. Align the notch of the foot to the crossbar and insert one end of the foot into the ventilation slot at a slight angle. The feet are keyed to ensure proper insertion.
4. Press the foot into the groove until it snaps firmly into place.
5. Repeat this process for the three remaining feet.

Removing the Feet

1. Power off the external hard drive and disconnect all its cables.
2. Place the drive upside down on a clean and steady surface.
3. Carefully dislodge the foot by firmly pushing it off the ventilation slot (Figure 4).
4. Repeat this process for the three remaining feet.

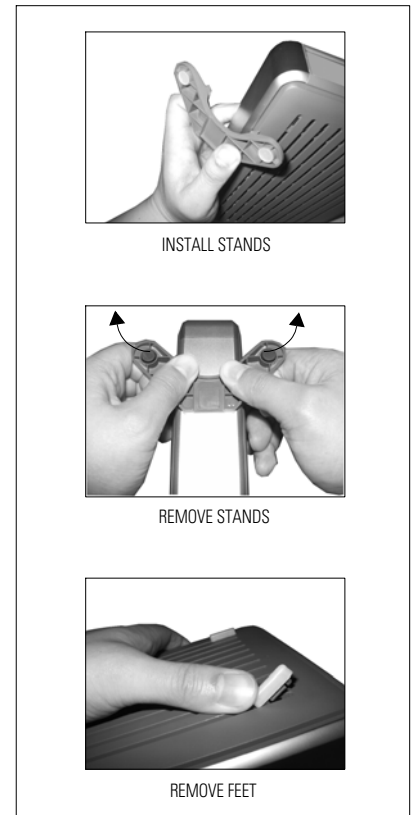


Figure 4

Connecting the Cables

1. Connect the AC adapter cord to the DC power supply socket on the back of the drive (Figure 5).
2. Connect one end of the power cord to the AC adapter.
3. Connect the other end of the power cord to an electrical outlet.
4. Connect one end of the USB 2.0 cable to the USB 2.0 port on the back of the drive (Figure 5).
5. Connect the other end of the USB 2.0 cable to an available USB port on your computer.
6. Press the Power button to turn on the drive (Figure 5). Your operating system automatically detects the external USB drive. The area surrounding the Power button illuminates blue and flashes to indicate drive activity.
7. Proceed to Section 4 to use the backup software.

Your WD Dual-option drive is preformatted as a single FAT32 partition for compatibility with all Windows operating systems. The FAT32 file system has a maximum file transfer of 4 GB. For more information about file formats and overcoming file size limitations, refer to your operating system manual or visit support.wdc.com, click **Knowledge Base**, and search for answer ID 1053 for Windows 2000 or answer ID 1021 for Windows XP. Macintosh users, see “Macintosh” on page 2 to reinitialize the drive to a Mac OS format.

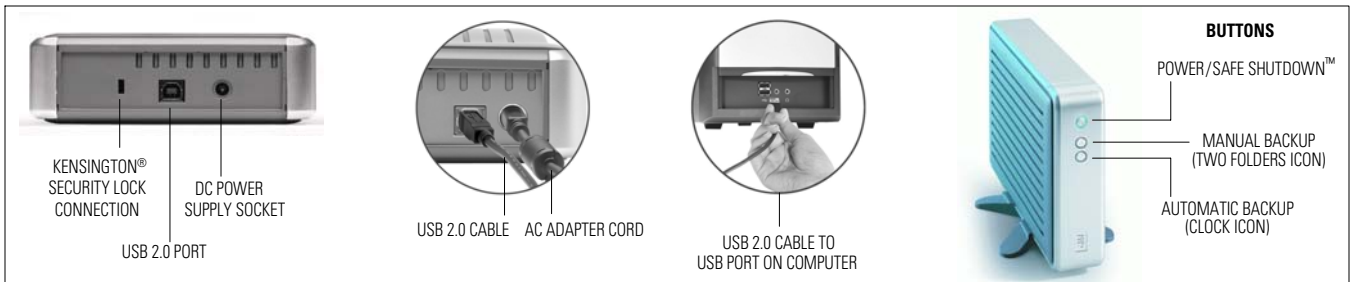


Figure 5

4 Using the Backup Software

This version of Dantz software does not support server applications. For more detailed instructions, refer to the user manual on the installation CD or obtain it from support.wdc.com.

Note: To create a backup that includes restoration of your operating system and programs, visit support.wdc.com, click **Knowledge Base**, and search for answer ID 1270.

Manual Backup (Backup on Demand)

1. Press the Manual Backup button (two folders icon) on the front of the drive to launch the initial setup wizard. Click **Next**.
2. Click the drive you want to back up. Click **Next**.
3. By default, the software copies **Documents Only**, which includes your contacts, documents, miscellaneous files, music, and pictures. This is the ideal choice for most users. Make your choice and click **Next**.
4. Select the drive on which to store your backup files. By default, the WD drive on which the button was pressed is the destination. Click **Next**.
5. The last window summarizes all settings specified in the Backup On Demand wizard. To make any changes, click **Back**; otherwise, click **Finish** to complete the setup. Each time you press the Manual Backup button, Retrospect Express launches the wizard and backs up your files.

Automatic Backup

1. Press the Automatic Backup button (clock icon) on the front of drive to launch the initial setup wizard. Click **Next**.
2. Click the drive you want to back up. Click **Next**.
3. By default, the software copies **Documents Only**, which includes your contacts, documents, miscellaneous files, music, and pictures. This is the ideal choice for most users. Make your choice and click **Next**.
4. Select the drive on which to store your backup files. By default, the WD drive on which the button was pressed is the destination. Click **Next**.
5. In the next several windows, specify the frequency, day, and time of your automatic backups.
6. The last window summarizes all settings specified in the Automatic Backup wizard. To make any changes, click **Back**; otherwise, click **Finish** to complete the setup. The area surrounding the Automatic Backup button is illuminated blue, indicating that backups are scheduled to occur automatically.

Important: Both the source and destination drives must remain powered on (not sleep mode) for automatic backups to occur at their scheduled times.

5 Disconnecting the Drive

CAUTION: To prevent data loss, be sure to close all active applications before shutting down the drive.

Using Safe Shutdown™

1. Press the Power/Safe Shutdown button once (Figure 5). You may hear the drive power down, and the power light turns off.
2. The drive is now shut down properly, and you may safely disconnect the drive.

Using Manual Shutdown

Note: If you used Safe Shutdown as described above, you need not follow the steps below; however, you may use these steps as an alternative method for disconnecting the drive.

Windows

1. Double-click the Safely Remove Hardware icon in your system tray (typically located on the bottom right corner of your desktop).
2. Select **USB Mass Storage Device** from the list and click **Stop** (Figure 6). Click **OK** to confirm your selection of the drive to be disconnected.
3. Click **Close** and press the Power button once. Now you may safely disconnect the USB cable from your computer and the power cord from the electrical outlet.

Macintosh

1. Find the Removable Disk icon associated with the drive you want to disconnect and drag it to the Trash icon on your desktop.
2. After the disk icon disappears from the desktop, you may safely disconnect the USB cable from your computer and the power cord from the electrical outlet.

SAFELY REMOVE HARDWARE ICON



Figure 6

Regulatory Compliance

FCC Class B Information

This equipment has been tested and found to comply with the limits of a Class B digital device, pursuant to Part 15 of the FCC Rules. These limits are designed to provide reasonable protection against harmful interference in a residential installation. This equipment generates, uses and can radiate radio frequency energy and, if not installed and used in accordance with the instructions, may cause harmful interference to radio or television reception, which can be determined by turning the equipment off and on, the user is encouraged to try to correct the interference by one or more of the following measures:

- Reorient or relocate the receiving antenna.
- Increase the separation between the equipment and receiver.
- Connect the equipment into an outlet on a circuit different from that to which the receiver is connected.
- Consult the dealer or an experienced radio/TV technician for help.
- Any changes or modifications not expressly approved by the manufacturer could void the user's authority to operate the equipment.

The following booklet, prepared by the Federal Communications Commission, may be helpful: *How to Identify and Resolve Radio/TV Interference Problems*. This booklet is Stock No. 004-000-00345-4 available from the US Government Printing Office, Washington, DC 20402.

CSA Notice

Le présent appareil numérique n'émet pas de bruits radioélectriques dépassant les limites applicables aux appareils numériques de la classe B prescrites dans le Règlement sur le brouillage radioélectrique édicté par le ministère des Communications du Canada.

This digital apparatus does not exceed the Class B limits for radio noise for digital apparatus set out in the Radio Interference Regulations of the Canadian Department of Communications.

Underwriters Laboratories Inc.

Approved for US and Canada. CAN/CSA-C22.2 No. 60950-1, UL 60950-1. Information Technology Equipment - Safety - Part 1: General Requirements (File E101559).

CE Compliance For Europe

Verified to comply with EN55022 for RF Emissions and EN50082-1 for Generic Immunity, as applicable.

Warranty Information

This product contains no user-serviceable parts. Refer servicing only to WD authorized personnel or a WD-approved service center.

Obtaining Service

WD values your business and always attempts to provide you the very best of service. If this Product requires maintenance, either contact the dealer from whom you originally purchased the Product or visit our product support Web site at support.wdc.com for information on how to obtain service or a Return Material Authorization (RMA). If it is determined that the Product may be defective, you will be given an RMA number and instructions for Product return. An unauthorized return (i.e., one for which an RMA number has not been issued) will be returned to you at your expense. Authorized returns must be shipped in an approved shipping container, prepaid and insured, to the address provided on your return paperwork. Your original box and packaging materials should be kept for storing or shipping your WD product. To conclusively establish the period of warranty, check the warranty expiration (serial number required) via support.wdc.com. WD shall have no liability for lost data regardless of the cause, recovery of lost data, or data contained in any Product placed in its possession.

Limited Warranty

WD warrants that the Product, in the course of its normal use, will be free from defects in material and workmanship for a period of one (1) year and will conform to WD's specification therefor. This limited warranty period shall commence on the purchase date appearing on your purchase receipt. WD shall have no liability for any Product returned if WD determines that the Product was stolen from WD or that the asserted defect a) is not present, b) cannot reasonably be rectified because of damage occurring before WD receives the Product, or c) is attributable to misuse, improper installation, alteration (including removing or obliterating labels and opening or removing external covers, unless authorized to do so by WD or an authorized service center), accident or mishandling while in the possession of someone other than WD. Subject to the limitations specified above, your sole and exclusive warranty shall be, during the period of warranty specified above and at WD's option, the repair or replacement of the Product. The foregoing warranty of WD shall extend to repaired or replaced Products for the balance of the applicable period of the original warranty or ninety (90) days from the date of shipment of a repaired or replaced Product, whichever is longer.

The foregoing limited warranty is WD's sole warranty and is applicable only to products sold as new. The remedies provided herein are in lieu of a) any and all other remedies and warranties, whether expressed, implied or statutory, including but not limited to, any implied warranty of merchantability or fitness for a particular purpose, and b) any and all obligations and liabilities of WD for damages including, but not limited to accidental, consequential, or special damages, or any financial loss, lost profits or expenses, or lost data arising out of or in connection with the purchase, use, or performance of the Product, even if WD has been advised of the possibility of such damages. In the United States, some states do not allow exclusion or limitations of incidental or consequential damages, so the limitations above may not apply to you. This warranty gives you specific legal rights, and you may also have other rights which vary from state to state.

Technical Support Services

If you need additional information or help during installation or normal use of this product, visit our product support Web site at support.wdc.com and search our knowledge base.

support.wdc.com
www.westerndigital.com

800.ASK.4WDC North America
949.672.7199 Spanish
+800.6008.6008 Asia Pacific
+31.20.4467651 EMEA

Western Digital
20511 Lake Forest Drive
Lake Forest, California 92630 U.S.A.

Western Digital is a registered trademark; and WD, the WD logo, WD Dual-option, and Safe Shutdown are trademarks of Western Digital Technologies, Inc. Retrospect and the Dantz logo are registered trademarks of Dantz Development Corporation. Other marks may be mentioned herein that belong to other companies.
© 2005 Western Digital Technologies, Inc. All rights reserved.

2079-001049-A02 04/05